



# AM

系列  
SERIES

磁力驅動無軸封泵浦  
MAGNETIC DRIVE SEAL-LESS PUMP



協磁公司秉持『專業、創新、品質、服務』理念，致力於流體機械研究開發已歷30餘年，在研發領域上，整合流力設計、流場分析、應力分析、磁場分析及CAD/CAM系統工具，形成一個完整而有效的產品開發環境，並在ISO 9001國際品保認證的品質系統運作架構下，提供客戶快速質優的服務品質。

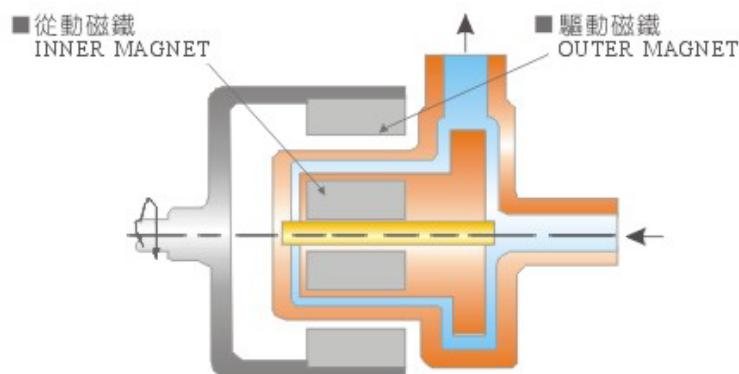
ASSOMA Inc. is a professional pump design and manufacturing company. In order to stay in today's competitive market, continuous innovation has been the company main business philosophy. Accumulating through the past three decades of assiduous experiences, currently we have attained an integrated product development atmosphere that is entirely computerized, systematic and technology inclined. The fully computerized integration comprises of stress/strain analysis, mode shape analysis, flow simulation, rotor dynamic & magnetic field analysis within the CAE module, and the advanced hydraulic design software incorporating 3D CAD/CAM techniques. These are the important integral of a complete and effective product design and development program.

## 無軸封泵浦動作原理 OPERATION PRINCIPLE

利用接附於馬達上之驅動磁鐵與接附於葉片上之從動磁鐵間的扭力傳遞，及介於兩者間屏蔽的採用，間接驅使葉輪運轉，即以此靜態密封方式來取代傳統動態軸封之裝置，藉以徹底解決洩漏的問題。

ASSOMA's magnetically driven seal-less pump is operated via the adoption of shelter (rear casing) within the magnetic coupling. Torque is transmitted via the magnetic coupling in which the outer magnet is equipped on the motor shaft and the inner magnet is encapsulated with the impeller. That is using static sealing instead of the traditional dynamic mechanical seal to completely solve the problem of leakage.

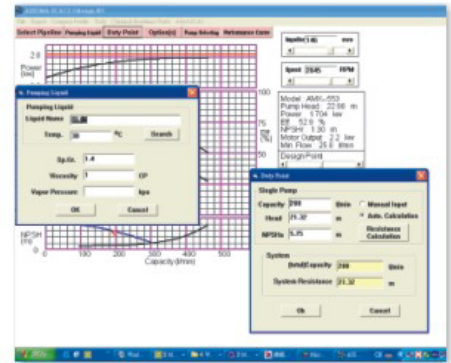
無軸封泵浦動作原理  
OPERATION PRINCIPLE DIAGRAM



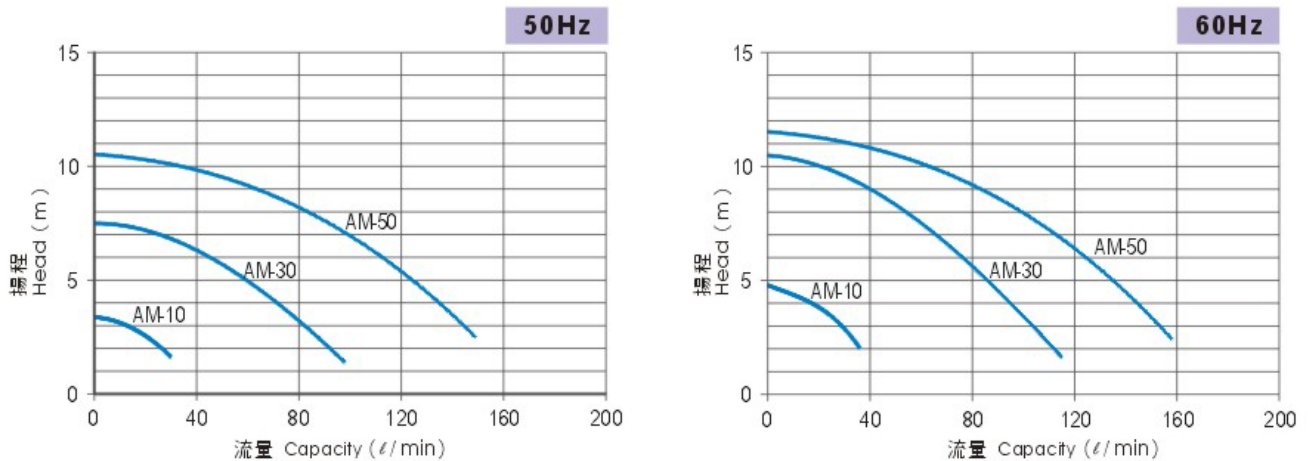


## 特性 FEATURES

- 提供插管、由任、法蘭多種配管方式，方便客戶選擇。  
Various pipe connections are offered: Union, flange or direct hose connection.
- 配合耐蝕環氧樹脂塗裝之金屬托架及不銹鋼腳架，可充分支撐泵浦及配管之負載。  
Both the epoxy-coated bracket and the stainless steel base plate are carefully integrated to maximize its structural strength against additional loading from the piping system.
- 配備IEC標準規格馬達：IP54或IP55防護等級、F級絕緣。  
Equipped IEC standard motor is with IP54 or IP55 protection and F class insulation.
- 接液部材質皆為耐蝕性強之工程塑膠，依輸送液腐蝕性強弱可選擇PP+GF或PVDF材質。  
Parts that come in contact with chemical fluid are made of corrosion resistant material. PP+GF or PVDF material can be selected based on the corrosive properties of the chemicals.
- 構造簡單，維修、保養容易。  
Simple structure with minimum parts makes the maintenance easier.
- 獨家採用ASSOMA-SCAC(系統計算與泵浦選用軟體)提供客戶泵浦選型與規格開立之服務。  
Providing special service of making pump specification and pump selection by the adoption of unique ASSOMA-SCAC(System Computing And Catalog) program.



## 性能曲線圖 PERFORMANCE CURVES



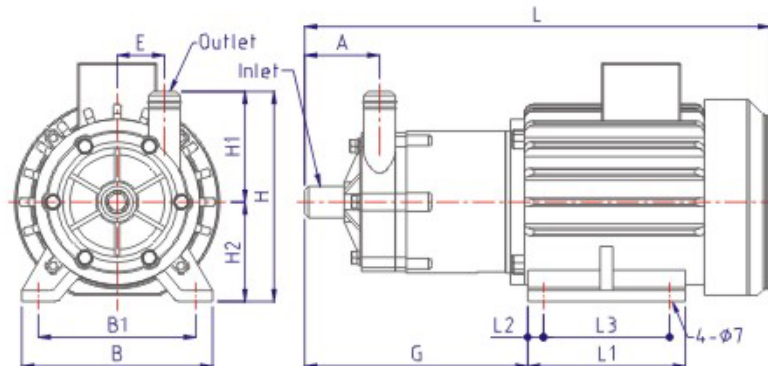
## 規格表 SPECIFICATIONS

機型 Model	入口×出口配管*				頻率 Frequency	額定流量 Rated Capacity (l/min)	額定揚程 Rated Head (m)	馬達輸出功率 Motor Output (Kw)	比重** S.G.
	插管 Hose	牙口 Thread	由任 Union	法蘭 Flange					
AM-10	20	G $\frac{3}{4}$	15		50Hz	20	2.6	0.065	1.3
					60Hz		3.8		
AM-30	25	G1	25	20	50Hz	40	6.3	0.18	1.0
					60Hz		8.2		
AM-50	25	G1	25	20	50Hz	80	8.2	0.25	1.1
					60Hz		9.3		

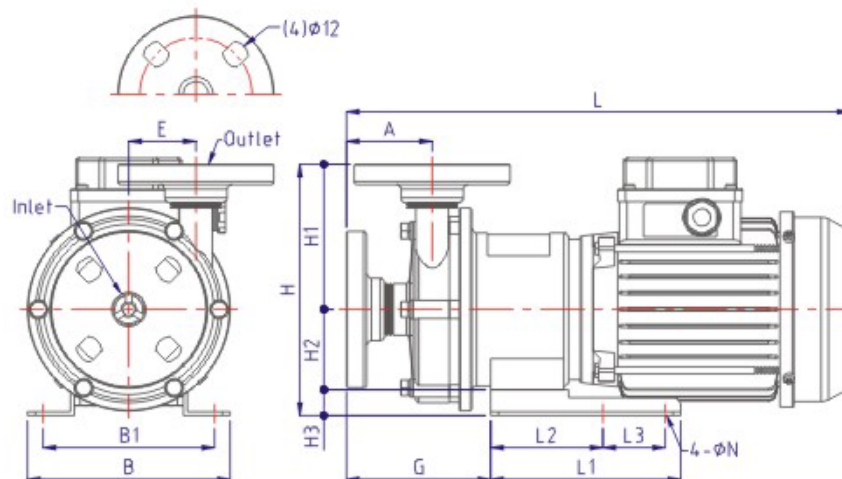
\* 泵浦入口由任可依客戶需求搭配DIN, JIS或ANSI之牙口或插管  
The union is available with standard of DIN, JIS or ANSI upon customer's request, either connected by hose or thread.

\*\* 當液體黏度為1CP時，泵浦操作的比重限制。  
The Limit of the specific gravity when the viscosity of the liquid is 1CP.

## 外型尺寸圖 DIMENSIONS



項目 型式 Model	尺寸 Dimension(mm)											
	A	B	B1	E	G	H	H1	H2	L*	L1	L2	L3
AM-10	47.5	121	100	30	141.5	133	70	63	296	100	10	80



項目 型式 Model	尺寸 Dimension(mm)													
	A	B	B1	E	G	H	H1	H2	H3	L*	L1	L2	L3	N
AM-30F	55	130	110	43	92.5	161	93	51.5	16.5	323	122	72	40	7
AM-50F	70	156	110	47	123	169	94	54.5	20.5	373	132	47	70	9

\*泵浦外型尺寸將因馬達供應商和安裝方式之不同而有所區別。  
Dimension of the pump will differ depending on the brand and installation of the motor.

## 型式表示 PUMP IDENTIFICATION

AM - F 50 F C V - 3

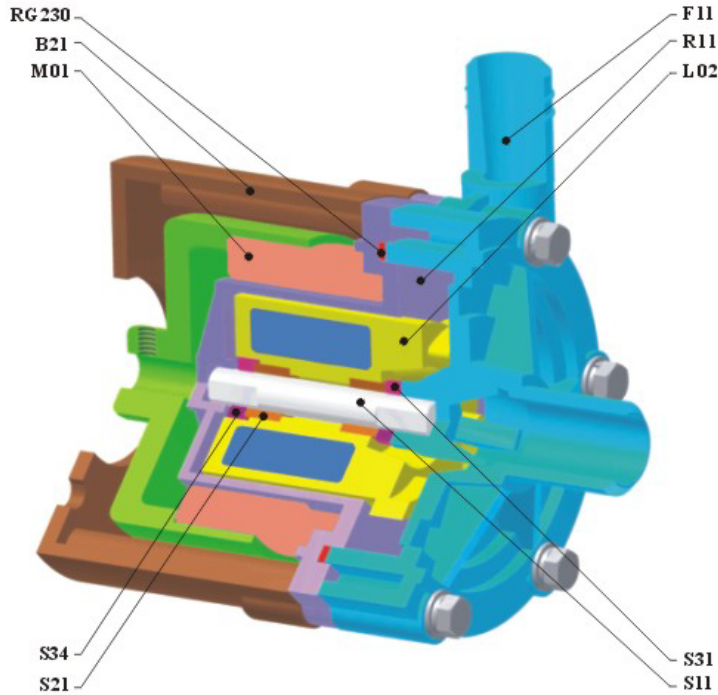
① ② ③ ④ ⑤ ⑥ ⑦

① 系列名稱 Series Symbol	ASSOMA AM 系列 Series
② 本體材質 Casing Material	無表示 None : PP+GF F : PVDF
③ 泵浦型式 Model	請參閱規格表 Please refer to the Specifications for detail
④ 入出口配管 Connection Type	無表示 None : 插管 Hose F : 法蘭 Flange T : 牙口 Thread U : 由任 Union

⑤ 軸承材質 Bearing Material	A : 995 Al <sub>2</sub> O <sub>3</sub> C : CARBON R : PTFE 含填充料 PTFE with filler S : SSiC
⑥ O-Ring 材質 O-Ring Material	V : VITON E : EPDM
⑦ 馬達電源 Power Source	1 : 60Hz 1 φ 110 / 220V 3 : 60Hz 3 φ 220 / 380V 4 : 60Hz 3 φ 220 / 440V 6 : 60Hz 3 φ 230 / 460V A : 50Hz 1 φ 110 / 220V B : 50Hz 3 φ 220 / 380V C : 50Hz 3 φ 208 / 415V S : 特殊馬達 Special motor

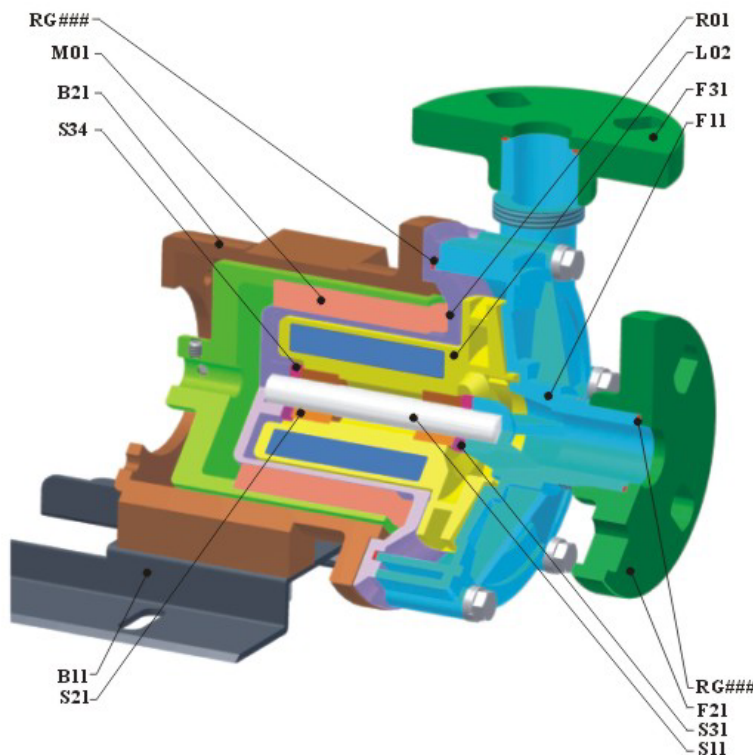
## 材質構造圖 MATERIAL

### AM-10



材質記號 Material		RE	RV
編號 Part code	名稱 Part name		
B21	托架 Bracket	PA66+GF	
EM	馬達 Motor	Aluminum Alloy	
F11	前蓋 Pump casing	PP/PVDF	
L02	葉輪組 Impeller	PP+GF/PVDF	
M01	外輪 Drive magnet	Ba-ferrite	
R11	後蓋 Rear casing	PP/PVDF	
RG230	O形環 O-ring	EPDM	VITON
S11	軸心 Shaft	995 CERAMIC	
S21	軸承 Bearing	PTFE 含填充料 PTFE with filler	
S31	前止推環 Front thrust ring	995 CERAMIC	
S34	後止推環 Rear thrust ring	995 CERAMIC	

### AM-30F/AM-50F



材質記號 Material		CE	CV	RE	RV	SE	SV
編號 Part code	名稱 Part name						
B11	底座 Base	SUS304					
B21	托架 Bracket	FC					
EM	馬達 Motor	Aluminum Alloy / FC					
F11	前蓋 Pump casing	PP+GF/PVDF					
F21	入口法蘭 Inlet flange	PP+GF/PVDF					
F31	出口法蘭 Outlet flange	PP+GF/PVDF					
L02	葉輪組 Impeller	PP+GF/PVDF					
M01	外輪 Drive magnet	Ba-ferrite					
R11	後蓋 Rear casing	PP+GF/PVDF					
RG###	O形環 O-ring	EPDM	VITON	EPDM	VITON	EPDM	VITON
S11	軸心 Shaft	995 CERAMIC					
S21	軸承 Bearing	CARBON	PTFE 含填充料 PTFE with filler			SSiC	
S31	前止推環 Front thrust ring	995 CERAMIC					
S34	後止推環 Rear thrust ring	995 CERAMIC					